

ENGINEERING / R&D



ABOUT US

Altelios Technology is an expert company specialized in innovation, new technologies and operational safety.

Our consultants contribute to the achievement of innovative technological projects allowing to anticipate the evolutions which will make the future.



Our consultants, based in France and Europe, work in a wide variety of sectors (Aerospace, Medical, Railway, Automotive, Energy, Luxury, Media) and in corporate services.

ENGINEERING / R&D DIVISION

Our Engineering/R&D Division employees support our customers in the design, development and manufacture of products and systems.

Our expertise lies in the following areas in particular :



**MECHANICAL ENGINEERING
AND INDUSTRIALIZATION**



ELECTRONIC ENGINEERING



SOFTWARE ENGINEERING



SYSTEM ENGINEERING

SKILLS

MECHANICAL ENGINEERING AND INDUSTRIALIZATION

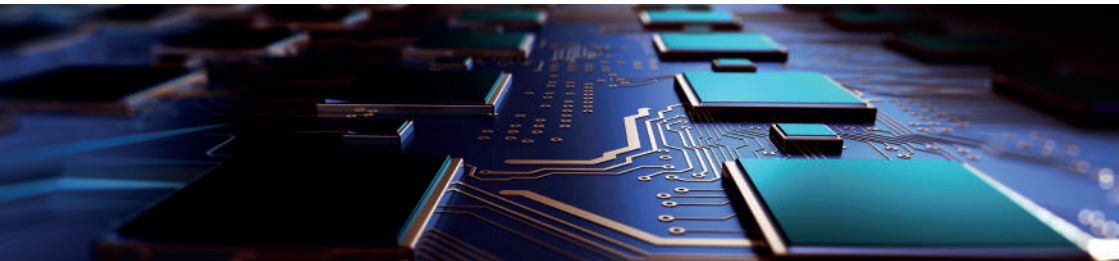
We provide expertise and know-how throughout the entire life cycle of industrial products, from research and development to preliminary design, production and operation...



Our services :

- Mechanical project management
- 2D/3D CAD mechanical studies
- Mechanical architecture design
- Mechatronic systems specification
- Design (Functional analysis, FMEA, CAD)
- Calculation (Finite element structure, RDM, Thermal)
- Testing & Test benches

ELECTRONIC ENGINEERING



Our services cover the entire lifecycle of electronic systems through the various phases of a project.

Our services :

- Electronic architecture definition
- Design and development of electronic boards
- Simulation and sizing
- Equipment qualification and certification
- Pre-production and production start-up monitoring
- Power electronics | Analog | Fast digital
- FPGA and Signal Processing

SOFTWARE ENGINEERING

We support our customers in the design, development and manufacture of embedded and/or application software, mainly in industrial environments. Our consultants work in constrained environments, either because of the need for performance, or because of a strong normative framework.

Our services :

- Embedded Linux development
- Real-time development
- Low-level development
- Communication software development
- Application and HMI development
- Image and signal processing
- Integration of Data Science solutions (deep learning, machine learning, etc.)



C++, Python, embedded C, FreeRTOS, STM32, Boost, STL, Network protocols.....

SYSTEM ENGINEERING

Our employees are involved in the design, development and production of complex, software-intensive systems, which require the implementation of a large number of systems, subsystems and equipment with numerous interfaces.

Our services :

- Requirements management
- Functional and logical architecture
- Integration, Verification, Validation, Qualification (IVVQ)
- Control system design
- Interface design

